

Genuine Accessories for the Citan.

Crewbus, panel van and Mixto.



Mercedes-Benz





04

TRANSPORT

Carrier systems | Load compartment accessories | Protectors & covers

12

INTERIOR COMFORT

Electronics | Protectors & covers

14

LIGHT-ALLOY WHEELS

Wheels | Wheel accessories

16

QUALITY & SAFETY

18

INDEX

01

Always ready.

Your Citan is built to cope with any challenge! No matter how big, long or bulky the items you want to transport, the flexible loading options offered by the Genuine Accessories range allow your Mercedes-Benz to demonstrate its strengths in every situation.

Strengths the city relies on. Day in, day out.





01 Cargo rack with loading roller*

Carrier bars and cargo rack in one – the integrated solution for transporting a diverse range of items. The robust steel structure expands your cargo space and offers a safe way to transport bulky and heavy loads.

The special surface coating provides effective protection against corrosion, for impressive durability. A hard rubber roller makes loading and unloading easier. The rack also offers plenty of options when it comes to securing and strapping down cargo as required. Aerodynamically optimised design minimises wind noise.

Available for all model variants without ladder hatch.
Material: steel, with black paint finish.

02 Standard basic carrier bars, 2 crossbars

Screw-fit to designated points in roof channel. The robust steel structure is designed to withstand the toughest of demands. Approved for loads of up to max. 100 kg (including weight of carrier bars).

Available for long and extra-long Citan without ladder hatch.
Material: steel/plastic, black.



03 High-standing bracket set for Standard basic carrier bars

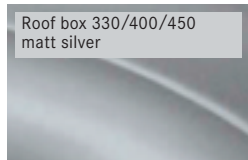
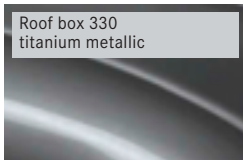
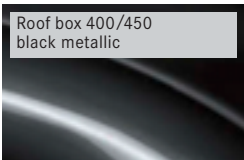
A quick and easy way of preventing all types of cargo mounted on the basic carrier bars from shifting sideways.

04 Ladder rack for Standard basic carrier bars

Allows a wide variety of ladders to be transported safely on the vehicle roof. The ladder rack comprises four high-standing brackets, a locking bracket and bungee cords for securing diverse items.



*Please bear in mind your vehicle's permissible roof load.



Roof box 400/450
black metallic

Roof box 330
titanium metallic

Roof box 330/400/450
matt silver

04

05

06

07

Mercedes-Benz roof boxes

Aerodynamic design, tailored to your Mercedes-Benz. Extremely durable material. Designed for quick, simple fitting to your basic carrier bars. Boxes open on both sides for particularly easy loading and unloading. Lockable on both sides. To use the roof boxes, your vehicle must be fitted with roof rails with integral basic carrier bars.

01 Mercedes-Benz roof box 330

Sports box. Capacity approx. 330 litres. Available in titanium metallic and matt silver. Optional accessories: luggage set and ski rack insert. Maximum payload 50 kg.¹

02 Mercedes-Benz roof box 400

Multipurpose box. Compact length, impressive amount of space! Capacity approx. 400 litres. With handle strip for easier opening and closing. Available in matt silver and black metallic. Maximum payload 75 kg.¹

03 Mercedes-Benz roof box 450

Family box in updated design. Capacity approx. 450 litres. With handle strip for easier opening and closing. Available in black metallic and matt silver. Optional accessories: luggage set and ski rack insert. Maximum payload 75 kg.¹

04 Ski rack insert for Mercedes-Benz roof boxes

Insert for securing your skis – precision-tailored to the internal dimensions of the roof box.

Ski rack insert for Mercedes-Benz roof box 450

A secure hold for up to five pairs of skis.²

Ski rack insert for Mercedes-Benz roof box 330 | not pictured

A secure hold for up to three pairs of skis.²

05 Luggage set for Mercedes-Benz roof boxes

Hardwearing, water-repellent polyester bags, designed to make perfect use of the space available in your roof box. All bags supplied with comfortable shoulder strap.

Luggage set for Mercedes-Benz roof box 330

Set of four bags. | not pictured

Luggage set for Mercedes-Benz roof box 400

Set of three bags plus one ski bag for max. two pairs of skis. Maximum ski length 170 cm. Ski bag's extension function cannot be used. Ski bag also available separately. | not pictured

Luggage set for Mercedes-Benz roof box 450

Set of four bags plus two ski bags, each designed to hold max. two pairs of skis.² Ski bag also available separately.

06 New Alustyle ski and snowboard rack "Standard"

For up to 4 pairs of skis² or 2 snowboards. Lockable. To use the ski and snowboard rack, your vehicle must be fitted with roof rails with integral basic carrier bars.

07 Roof rails with integral basic carrier bars

The roof rails with integral basic carrier bars can also be used as a roof rack. Simply raise the side supports and position them at right angles (carrying position). Maximum payload 80 kg. Available for long Citan.

¹ Please bear in mind your vehicle's permissible roof load.

² Subject to geometry of skis.

Transformed.

Your Citan has many different faces. Even when the working day is over, it's there to support you in a variety of ways. With carrier systems from the Genuine Accessories range from Mercedes-Benz, for example, you can tailor it to suit your leisure activities.

A Citan's work never stops.



03

07



01 New Alustyle bicycle rack

Extremely lightweight bicycle rack, designed to be attached to the basic carrier bars. Cycles can either be attached to the rack once it has been fitted to the roof or before it is fitted. Support frame folds down when not in use to reduce drag when travelling without cycles. Suitable for cycles with a max. frame diameter of 98 mm (circular frame tubes) or 110 x 70 mm (oval frame tubes). Your basic carrier bars will hold up to 2 bicycle racks¹. To use the bicycle rack, your vehicle must be fitted with roof rails with integral carrier bars.

02 Coil lock

Available as a separate accessory for the bicycle rack.

03 Rigid trailer coupling

Corrosion-protected finish. Maximum drawbar load 75 kg. 13-pin electrical kit available separately.

04 Mini adapter

For trailer with 7-pin plug.

05 Rear-mounted bicycle rack for trailer coupling, folding²

Easy-to use, lockable rear-mounted bicycle rack, designed to provide secure transport for 2 or 3 cycles. Rack is easy to attach to trailer coupling, and cycles are equally easy to fit to rack. Maximum payload of up to 30 kg per rail, making rack suitable for most ebikes. An ingenious roller mechanism means that the load compartment can still be opened. The rack is easy to fold for space-saving stowage in the load compartment, at your holiday accommodation or at home.

¹ Please bear in mind your vehicle's permissible roof load.

² The handlebars of the bike nearest to the vehicle must be rotated around 90°. Otherwise there is a risk that they will come into contact with the tailgate or rear window, causing damage.





01 Luggage compartment cover

Offers protection from prying eyes. The roller cover is very easy to fit and latches into designated notches in the bodywork, the backrest of the rear bench seat and the load compartment trim.

02 Shallow load compartment tub

Made from impact-resistant, non-slip polypropylene. Suitable for transporting foodstuffs. Structured surface holds separately available stowage crate in place. With Velcro strip for attaching concertina load sill protector. Available for crewbus and panel van without additional load compartment panelling.

03 Stowage crate

A secure hold for items which are prone to tip over or slide around, e.g. shopping bags. Adjustable partitioning elements allow crate to be divided into max. 4 sections. Optimum functionality only in conjunction with shallow load compartment tub.

04 Deep load compartment tub

Deep edge all round. Made from flexible, impact-resistant HD-PE plastic. Suitable for transporting foodstuffs. Available for panel van without additional load compartment panelling.



05



06



07



08



09



10



11



12

**05 Coolbox**

Not only cools but warms too. Cools to up to 20°C below ambient temperature – to max. -2°C. Can be switched to warming function. Robust, highly insulated hard case with fabric cover, outside pockets and padded strap for carrying. Capacity 24 litres. Can be connected to 12 V socket in vehicle or to 230 V power source via separately available rectifier.

06 Rectifier

Allows the coolbox to be connected to a 230 V socket at home.

07 Charger with trickle charge function

New life for your vehicle's battery: checks, charges and revives your battery – even if it's totally flat. Tailored to your vehicle's complex electronic systems. Available in 3.6 A and 25 A version.

08 Multipurpose box

Practical folding box, ideal for shopping and a host of other transportation tasks. Waterproof. Maximum load capacity 30 kg.

09 Fluorescent jackets

Already compulsory in many countries: fluorescent jackets with high-visibility reflective stripes. Available individually or as a pack of two.

10 Luggage net

Available for the floor of the load compartment. Prevent lightweight objects from sliding around during your journey. All nets are in pocket format.

11 Tie-down strap

Adjustable strap with ratchet fastener – ideal for securing items to the load-securing rings.

12 Concertina load sill protector

Protects the rear of the vehicle from scratches when you're loading the van – and prevents dirt from the vehicle from getting onto your clothes. Practical design – can be attached to shallow load compartment tub or the load-securing rings.



01 Radio

The LCD radio features AUX and USB ports. It enables Bluetooth® telephony and audio streaming. Available with or without CD player.

02 Seat cover, "Lima black"

Optimum fit in original design: the colour and pattern of the seat covers are based on the original seats, and the covers are available for virtually all seat variants. They do not affect the function of special features such as the ISOFIX attachment points.



Mercedes-Benz floor mats

Floor mats have to undergo rigorous testing before they are deemed worthy of the star logo: durability, fade-resistant colour and a neutral odour, even after three winters of use, are all specifications which must be met without compromise. The mats are precision-tailored to your Mercedes-Benz using the vehicle's original CAD data. The driver's mat can be clip-fastened to the floor of the vehicle to prevent slipping. Supplied with adapter pins for polyurethane floor.

03 All-season mats

Robust, washable synthetic mats, designed for heavy use. Contemporary design with recessed areas and raised edge. With distinctive Mercedes-Benz star logo. Available in black. Coordinating mats for the passenger compartment are available separately.

04 Velour mats

Elegant, high-quality tufted velour mats. Durable and extremely hardwearing. With embroidered logo and Mercedes-Benz lettering. Available in black. Coordinating mats for the passenger compartment are available separately.

05 Rep mats

Durable, extremely hardwearing needle felt mats. With embroidered logo and Mercedes-Benz lettering. Available in black. Coordinating mats for the passenger compartment are available separately.



04



05



Protected.

Every day brings new challenges. You need a vehicle that is designed to cope.

Make your Citan a resilient companion with robust and durable protective products from the Genuine Accessories range.

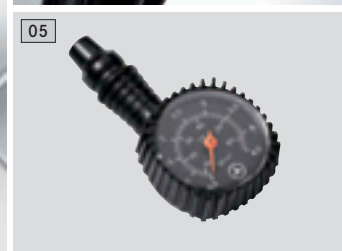
For a clean and tidy look at the end of the day.



Strong character.

Make a powerful impression! Take to the city's roads with confidence and give your Citan an unmistakable look: for example with distinctive light-alloy wheels from Mercedes-Benz.

Leaving no questions unanswered.



01 12-spoke wheel

Finish: silver

Wheel: 6.5J x 16 ET 44 | Tyre: 205/55 R16

A415 401 1000

02 7-spoke wheel

Finish: silver

Wheel: 6.5J x 15 ET 44 | Tyre: 195/65 R15

A415 401 0900

03 Hub caps

Protect the hub from dirt.

Available in silver with chrome star.

04 Valve caps, black

Stylish highlights in a new design.

Protect the valves from dirt. Set of 4.

05 Tyre pressure gauge

Allows you to carry out a quick tyre pressure check on the road or at home. Keeping tyres at the optimum pressure saves fuel and reduces tyre wear. Suitable for all motor vehicle tyre valves and for cycle valves. Supplied with leather pouch.

06 Snow chains

High-performance chain for the toughest of conditions and excellent traction on snow and ice. Easy to fit – fastens on outside.

07 Mud flaps

Protect the underbody and the sides of the vehicle from loose chippings and dirt. Available in pairs for front or rear axle. Black.



Mercedes through and through.

When you drive a Mercedes-Benz, you do so for the best of reasons. Why should your choice of accessories be governed by different standards? Pioneering when it comes to design and technology, Mercedes-Benz Genuine Accessories deliver on the promises of a major brand.



DESIGN & DEVELOPMENT

Mercedes-Benz Genuine Accessories make your dream vehicle a reality – while ensuring that it remains a Mercedes-Benz through and through:

- ▶ Individualisation options are developed in accordance with the Mercedes-Benz vehicle design philosophy.
- ▶ The use of CAD data from Mercedes-Benz Vehicle Development ensures precision-fit accessories.



QUALITY & SAFETY

When it comes to Mercedes-Benz vehicles, quality and safety are paramount. You can feel equally safe with Mercedes-Benz Genuine Accessories as a result of:

- ▶ Stringent safety measures and extensive load testing, including the use of crash test facilities and the wind tunnel.
- ▶ Harmonised development of both vehicle and Mercedes-Benz Genuine Accessories.
- ▶ The highest of standards, far in excess of those prescribed by law.

FUNCTION & OPERATION

Mercedes-Benz Genuine Accessories form part of the vehicle concept from the outset. This results in impressive functional solutions:

- ▶ Fully integrated telematics products can be operated safely and conveniently using the multifunction steering wheel.
- ▶ Roof-mounted carrier systems can be fitted quickly and without the use of additional tools.
- ▶ Instructions and manuals are in standard format and easy to understand.

ADVICE & FITTING

No one is as familiar with the ins and outs of your vehicle as our employees. And the same goes for Mercedes-Benz Genuine Accessories:

- ▶ Contact your Mercedes-Benz Service and Sales partners for expert advice.
- ▶ Trust our trained specialists when it comes to fitting Mercedes-Benz Genuine Accessories.

INDEX

Description	p	Item no.
Cargo rack with loading roller for compact Citan	05	A415 890 0793
Cargo rack with loading roller for long Citan	05	A415 890 0293
Cargo rack with loading roller for extra-long Citan	05	A415 890 0893
Charger with trickle charge function (ECE version, 5 A)	11	A000 982 3021
Charger with trickle charge function (ECE version, 25 A)	11	A000 982 0321
Concertina load sill protector	11	A212 680 0246
Coolbox	11	A000 820 4206
Floor mats:		
All-season mats, driver and co-driver compartment	12	A415 680 0048
All-season mats, passenger compartment	12	A415 680 1348
Rep mats, driver and co-driver compartment	12	A415 680 0648
Rep mats, passenger compartment	12	A415 684 0203
Velour mats, driver and co-driver compartment	12	A415 680 1500
Velour mats, passenger compartment	12	A415 684 0100
Fluorescent jacket, orange	11	A000 583 0461
Fluorescent jacket, compact	-	A000 583 3500
High-standing bracket set for Standard basic carrier bars	05	A906 840 0118
Hub caps	15	A415 400 2800
Ladder rack for Standard basic carrier bars	05	A906 840 0018
Light-alloy wheels:		
7-spoke wheel	15	A415 401 0900
Wheel: 6.5J x 15 ET 44 Tyre: 195/65 R15		
12-spoke wheel	15	A415 401 1000
Wheel: 6.5J x 16 ET 44 Tyre: 205/55 R16		
Load compartment tub, deep	10	A415 868 0107
Load compartment tub, shallow	10	A415 868 0007
Luggage compartment cover for extra-long Citan	10	A415 810 0109
Luggage net, floor of load compartment for panel van and Mixto	11	A212 868 0374
Mini adapter for vehicle trailer	08	A000 821 1856
Mud flaps, front set	15	A415 890 0078
Mud flaps, rear set	15	A415 890 0178
Multipurpose box	11	B6 656 0323
New Alustyle bicycle rack	08	A000 890 0293
New Alustyle ski and snowboard rack "Standard"	06	A000 890 0493

Description	p	Item no.
Radios:		
Installation kit for crewbus, incl. 4 loudspeakers*	-	A415 820 0302
Installation kit for panel van and crewbus, incl. 2 loudspeakers*	-	A415 820 0202
Radio with CD player	12	A415 820 0800
Radio without CD player	12	A415 820 0700
Rear-mounted bicycle rack for trailer coupling, folding (ECE) for max. 2 cycles	08	A000 890 0300
Rear-mounted bicycle rack for trailer coupling, folding (ECE) for max. 3 cycles	08	A000 890 0400
Rectifier	11	A000 982 0021
Roof box 330, matt silver	06	A000 840 0400
Roof box 400, black metallic	06	A000 840 0000
Roof box 400, matt silver	06	A000 840 0100
Roof box 450, black metallic	06	A000 840 0200
Roof box 450, matt silver	06	A000 840 0300
Roof rails with integral basic carrier bars	06	A415 890 1593
Seat cover, "Lima black" for co-driver's seat	12	A415 970 0188
Seat cover, "Lima black" for driver's seat	12	A415 970 0088
Seat cover, "Lima black" for head restraint	12	A415 970 0388
Seat cover, "Lima black" for rear seats	12	A415 970 0288
Ski rack insert for roof box 330	06	A000 840 4718
Ski rack insert for roof box 400	06	A000 840 2193
Ski rack insert for roof box 450	06	A000 840 4818
Standard basic carrier bars, 2 crossbars	05	A415 890 1093
Stowage crate	10	A000 814 0041
Tie-down strap	11	A000 890 0294
Trailer coupling, rigid	08	A415 315 0400
Tyre pressure gauge	15	B6 658 8140
Valve caps, black	15	B6 647 2002
Light-alloy wheels are supplied without tyres, wheel bolts or hub caps.		
Further colour variants for individual products can be found in the separate price list for this brochure.		
* not pictured		

Information about fuel consumption and CO₂ emissions

Crewbus:

Fuel consumption¹ (l/100 km)

combined 4.8 – 4.3

CO₂ emissions¹ (g/km)

combined 126 – 112

Consumption and CO₂ figures for 111 CDI and 112 engines
not available at the time of going to press.

Panel van:

Fuel consumption¹ (l/100 km)

combined 5.0 – 4.3

CO₂ emissions¹ (g/km)

combined 130 – 112

Consumption and CO₂ figures for 111 CDI and 112 engines
not available at the time of going to press.

Mixto:

Fuel consumption¹ (l/100 km)

combined 5.0 – 4.7

CO₂ emissions¹ (g/km)

combined 130 – 123

Consumption and CO₂ figures for 111 CDI and 112 engines
not available at the time of going to press.

¹The figures shown were obtained in accordance with the prescribed measuring process (Directive 80/1268/EEC in the currently applicable version). The figures are not based on an individual vehicle and do not constitute part of the product offer; they are provided solely for purposes of comparison between different vehicle models.

More information on the official fuel consumption figures and the official specific CO₂ emissions for new passenger cars is provided in the publication "Leitfaden über den Kraftstoffverbrauch und die CO₂-Emissionen neuer Personenkraftwagen" ["Guidelines on fuel consumption and CO₂ emissions for new passenger cars"], which is available free of charge from all sales outlets and from Deutsche Automobil Treuhand GmbH.

March 2016.

Please note: changes may have been made to the products since this catalogue went to press (03/2016). The manufacturer reserves the right to make changes to the design, form, colour and specification during the delivery period, provided these changes, while taking into account the interests of the vendor, can be deemed reasonable with respect to the purchaser. Where the vendor or the manufacturer uses symbols or numbers to describe an order or the subject of an order, no rights may be derived solely from these. The illustrations may show accessories and optional extras which are not part of standard specification. Colours may differ slightly from those shown, owing to the limitations of the printing process. This publication may contain products and services which are not available in certain countries. Information given regarding statutory regulations, legal requirements and taxation and the consequences thereof applies to the Federal Republic of Germany only and is correct at the time of going to press. Please consult your Mercedes-Benz retailer for final details. Prices subject to change.

Daimler AG, Mercedesstr. 137, 70327 Stuttgart
Mercedes-Benz Accessories GmbH · A Daimler Company

3231 · 1017 · 02-02/0316 · Printed in the Federal Republic of Germany
© 2016 Mercedes-Benz Accessories GmbH. All rights reserved.